

# PROACT.



**REFERENCE :** PA366

**SIZES :** S\_M\_L\_XL

**COMPOSITION :**

Main fabric : Inside brushed polyester jersey - 345 100% polyester

Lining : Cotton single jersey (22/1) - 180 For hood lining and front & chest pockets sacks & garages 100%cotton

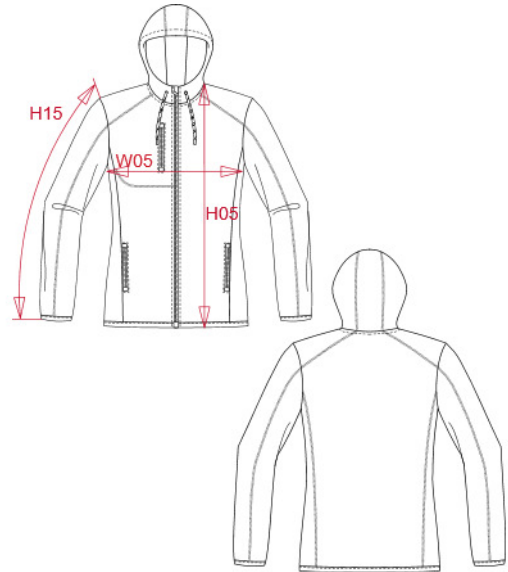
**WEIGHT :**

Main fabric : 345 gsm

Lining : 180 gsm

**ARTICLE WEIGHT :**

590 gr/pc



DESCRIPTION
<b>Français :</b> Veste capuche chinée femme
<b>English :</b> Ladies' heather hooded jacket
<b>Nederlands :</b> Ladies' heather hoodie
<b>Deutsch :</b> Damen-Hoodie aus Chiné
<b>Español :</b> Chaqueta jaspeada con capucha de mujer
<b>Italiano :</b> Giacca donna screziata con cappuccio
<b>Português :</b> Casaco com capuz de senhora mesclado

COLORS	PANTONE SERIGRAPHIE
Light grey melange	-
Light royal blue melange	-

MEASUREMENT						
Description	S	M	L	XL		
<b>H05 (L)</b> Hauteur totale / Total height	63,40	65,40	67,40	69,40		
<b>W05 (L)</b> 1/2 largeur poitrine / 1/2 chest width	47	50	53	56		
<b>H15L (L)</b> Longueur manche longue / Long sleeve length	62	63	64	65		

CARE LABEL				

PACKING	
Box	15 pcs / box S => L:55cm W:36cm H:52cm GW:10.5kg NW:9.5kg M => L:55cm W:36cm H:52cm GW:11kg NW:10kg L => L:58cm W:38cm H:52cm GW:11.5kg NW:10.5kg XL => L:58cm W:38cm H:52cm GW:12kg NW:11kg