

KARIBAN

REFERENCE : K651

SIZES : XS_S_M_L_XL_XXL

COMPOSITION :

Fabric 1 : Softshell Polyester / Elastane woven 95/5 - 300 95% polyester / 5%elastane

Lining : Polyester 210T - 60 For quilted body and hood lining, hood tunnel and sleeve lining 100%polyester

Lining 2 : Polyester polytricot - 120 For pocket sacks and inner front placket. 100%polyester

Padding : Polyfil 120 For quilted body lining 100%polyester

Padding : Polyfil 100 For quilted sleeve lining 100%polyester

WEIGHT :

Fabric 1 : 300 gsm

Lining : 60 gsm

Lining 2 : 120 gsm

Padding : 120 gsm

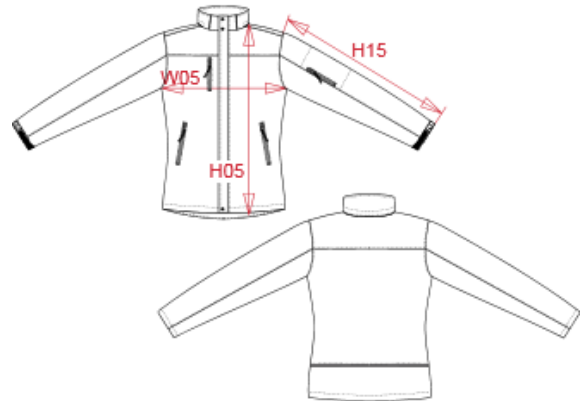
Padding : 100 gsm

FABRIC CONSTRUCTION AND FINISHING :

3 layers bonded (outer: 95%polyester 5%elastane / performance membrane / inner: microfleece polar) BR: 3000gsm/24h / WP: 8000mm

ARTICLE WEIGHT :

980 gr/pc



DESCRIPTION	
Français :	Parka softshell doublée capuche femme
English :	Ladies' hooded softshell lined parka
Nederlands :	Gewatteerde softshell damesparka met capuchon
Deutsch :	Damenparka Softshell wattiert mit Kapuze
Español :	Parka Softshell forrada con capucha para mujer
Italiano :	Parka donna softshell imbottito con cappuccio
Português :	Parka Softshell acolchoada de senhora com capuz

COLORS	PANTONE SERIGRAPHIE
Black	Black
Navy	296C
Titanium	7540C

MEASUREMENT							
Description	XS	S	M	L	XL	XXL	
H05 Hauteur totale dvt / Front total height	66	67,50	69	70,50	72	73,50	
W05 1/2 largeur poitrine / 1/2 chest width	48	50	52	54	56	58	
H15 Longueur manche / Sleeve length	60,50	61,50	62,50	63,50	64,50	65,50	

CARE LABEL				

PACKING	
Box	10 pcs / box XS-S => L:50cm W:35cm H:38cm GW:11.70kg NW:10.70kg M-L => L:55cm W:37cm H:38cm GW:12.80kg NW:11.70kg XL-XXL => L:60cm W:40cm H:38cm GW:14.20kg NW:13.00kg